



# FIVE ESTUARIES OFFSHORE WIND FARM ENVIRONMENTAL STATEMENT

VOLUME 6, PART 7, ANNEX 10.3.24  
FIGURE 10.44 VIEWPOINT E HARWICH

Application Reference	EN010115
Application Document Number	6.7.10.3.24
Revision	A
APFP Regulation:	5(2)(a)
Date	March 2024



Project	Five Estuaries Offshore Wind Farm
Sub-Project or Package	Environmental Statement
Document Title	Volume 6, Part 7, Annex 10.3.24 Figure 10.44 Viewpoint E Harwich
Application Document Number	6.7.10.3.24
Revision	A
APFP Regulation	5(2)(a)
Document Reference	005024271-01

COPYRIGHT © Five Estuaries Offshore Wind Farm Ltd

All pre-existing rights reserved.

This document is supplied on and subject to the terms and conditions of the Contractual Agreement relating to this work, under which this document has been supplied, in particular:

#### LIABILITY

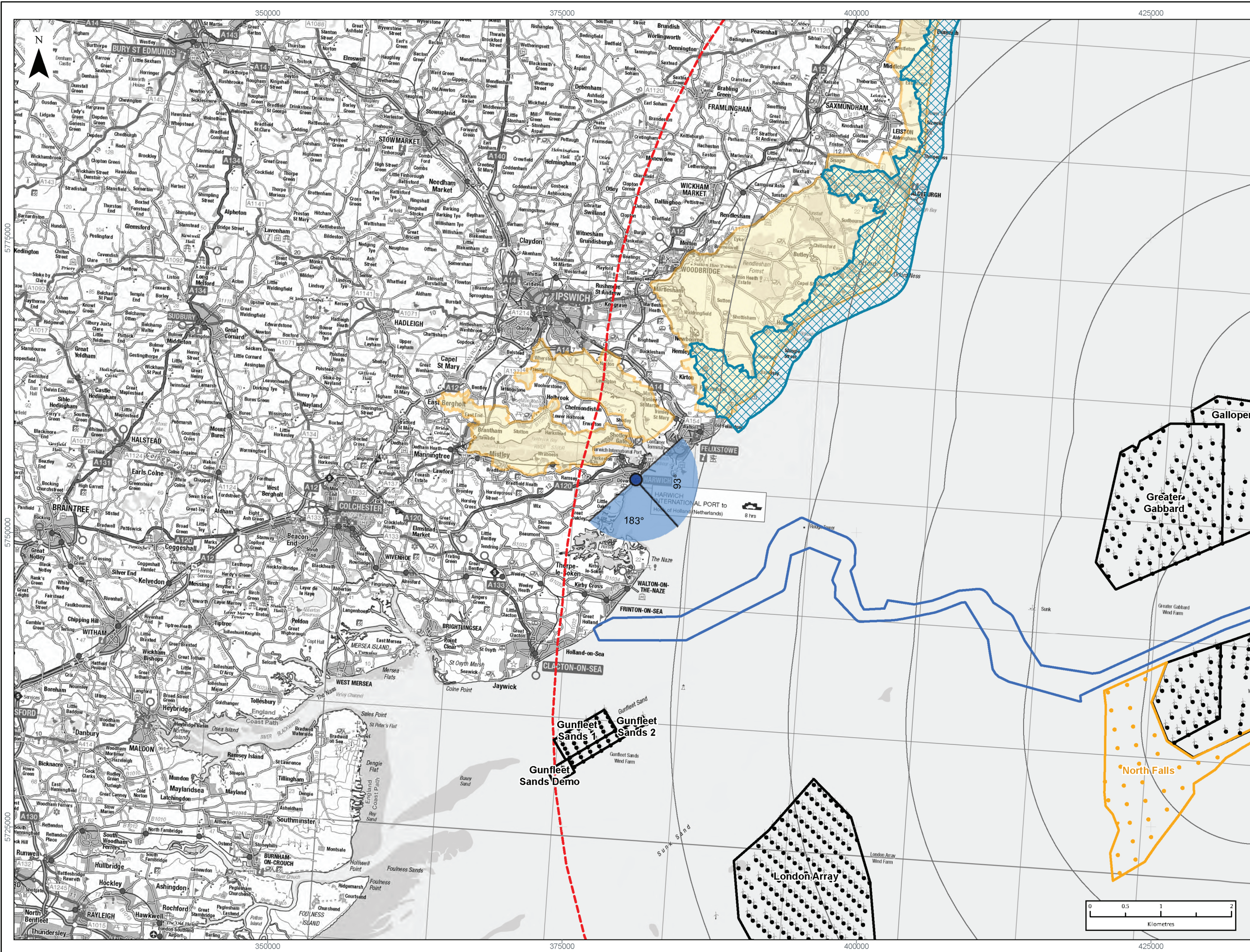
In preparation of this document Five Estuaries Offshore Wind Farm Ltd has made reasonable efforts to ensure that the content is accurate, up to date and complete for the purpose for which it was contracted. Five Estuaries Offshore Wind Farm Ltd makes no warranty as to the accuracy or completeness of material supplied by the client or their agent.

Other than any liability on Five Estuaries Offshore Wind Farm Ltd detailed in the contracts between the parties for this work Five Estuaries Offshore Wind Farm Ltd shall have no liability for any loss, damage, injury, claim, expense, cost or other consequence arising as a result of use or reliance upon any information contained in or omitted from this document.

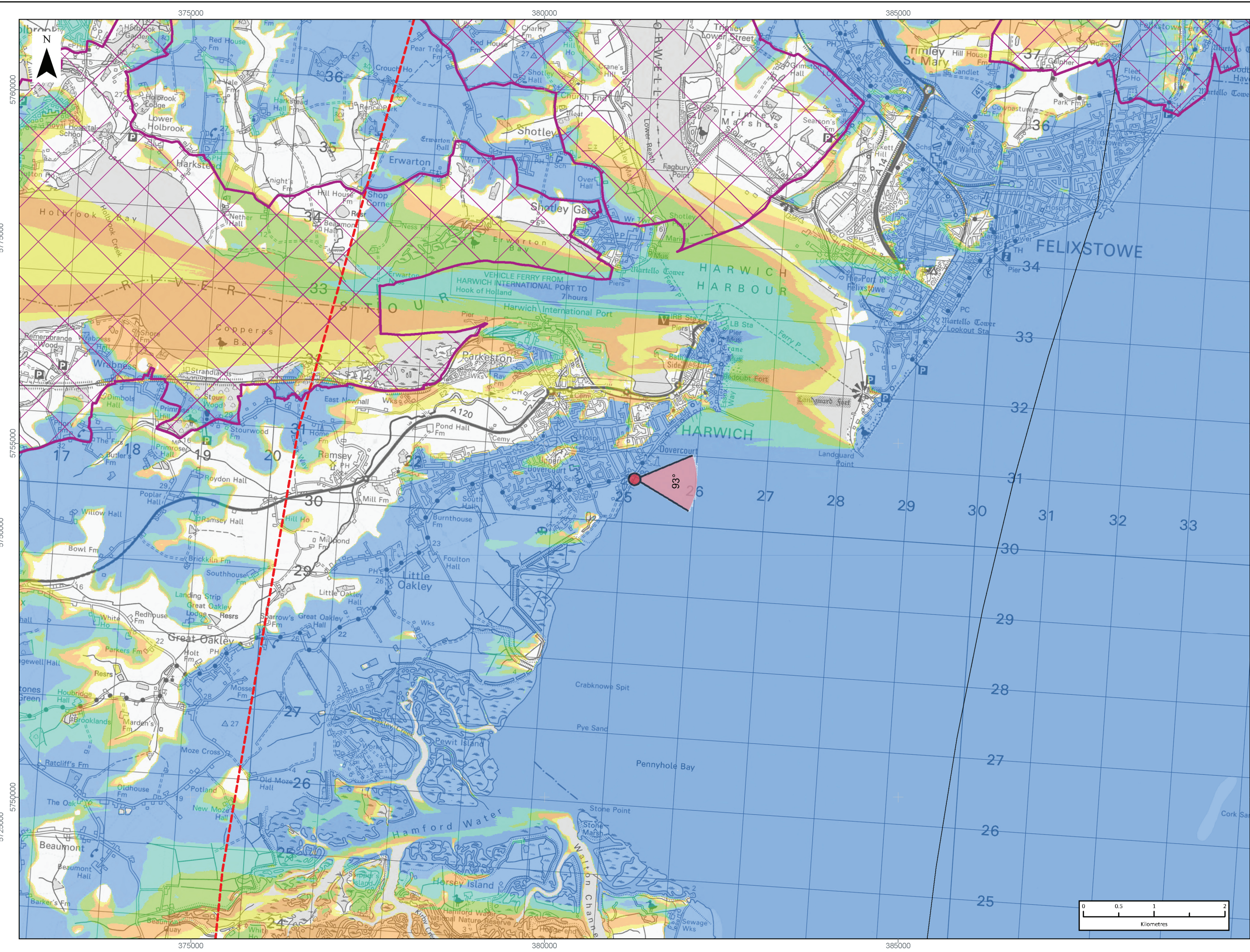
Any persons intending to use this document should satisfy themselves as to its applicability for their intended purpose.

The user of this document has the obligation to employ safe working practices for any activities referred to and to adopt specific practices appropriate to local conditions.

Revision	Date	Status/Reason for Issue	Originator	Checked	Approved
A	Mar-24	ES	OPEN	GoBe	VEOWFL



Viewpoint Location Plan Baseline Panorama (90 Degree View)  
Scale: 1:300,000



Viewpoint Location Plan (53.5 Degree View)  
Scale: 1:50,000

**LEGEND**

- 53.5 Degree Field of View
- 90 Degree Field of View
- Array Areas
- Offshore Export Cable Corridor
- 10km Radii
- 60km Study Area
- Suffolk Heritage Coast
- Suffolk Coast & Heaths Area of Natural Beauty (CWF Pane)
- Suffolk Coast & Heaths Area of Natural Beauty (Viewpoint Pane)
- Wind Farm Development Status
  - Operational
  - Pre-Application

**No. of Blade Tips Theoretically Visible\***

- 1 - 10
- 11 - 20
- 21 - 30
- 31 - 40
- 41

**\*TV Parameters**  
Blade Tip: 39.5m  
DTM: OS T5/T50/SRTM  
DTM Resolution: 10m  
Observer Height: 2m  
Surface Features: Excluded  
Earth Curvature: Included

**PROJECT TITLE:**  
FIVE ESTUARIES OFFSHORE WINDFARM

**DRAWING TITLE:**  
Viewpoint Plan - VP E  
Harwich

VER	DATE	REMARKS	Drawn	Checked
1	02/02/2024	For Issue	RA	SM

**DRAWING NUMBER:**  
10.44a

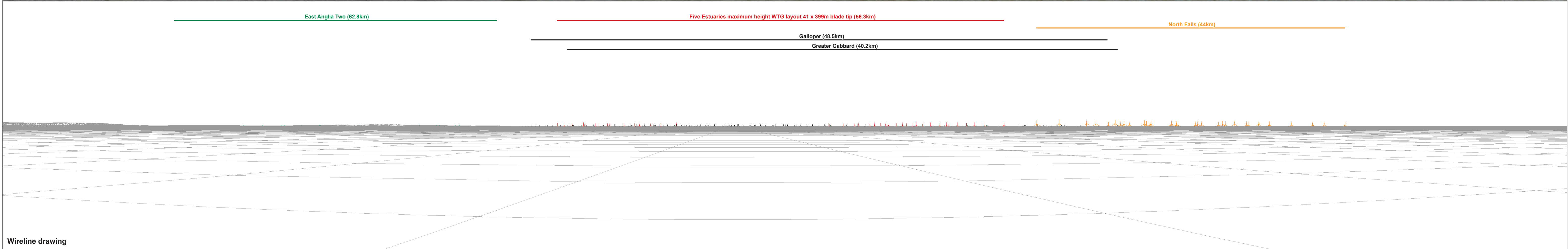
SCALE: 1:50,000 | PLOT SIZE: A3 | DATUM: WGS84 | PROJECTION: UTM31N

**FIVE ESTUARIES OFFSHORE WIND FARM**



Baseline photograph

This image provides landscape and visual context only



Wireline drawing

OS reference: 625142 E 230614 N  
 Eye level: 1.7 mAOD  
 Direction of view: 93°  
 Nearest turbine: 56.3 km  
 VE Array Area: 55.1 km

Horizontal field of view: 90° (cylindrical projection)  
 Principal distance: 522 mm  
 Paper size: 841 x 297 mm (half A1)  
 Correct printed image size: 820 x 130 mm

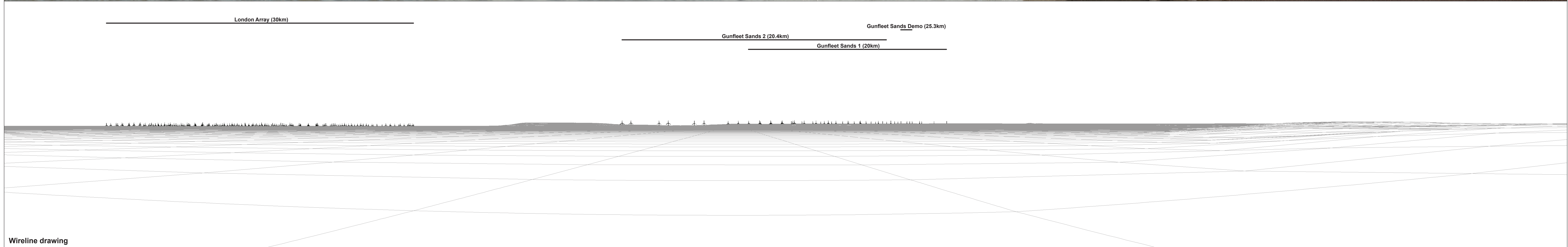
Camera: Canon EOS 6D  
 Lens: Canon EF 50mm f/1.4  
 Camera height: 1.5 m  
 Date and time: 23/09/2021 13:53

Figure 10.44b  
 Viewpoint E: Harwich  
 Five Estuaries



Baseline photograph

This image provides landscape and visual context only



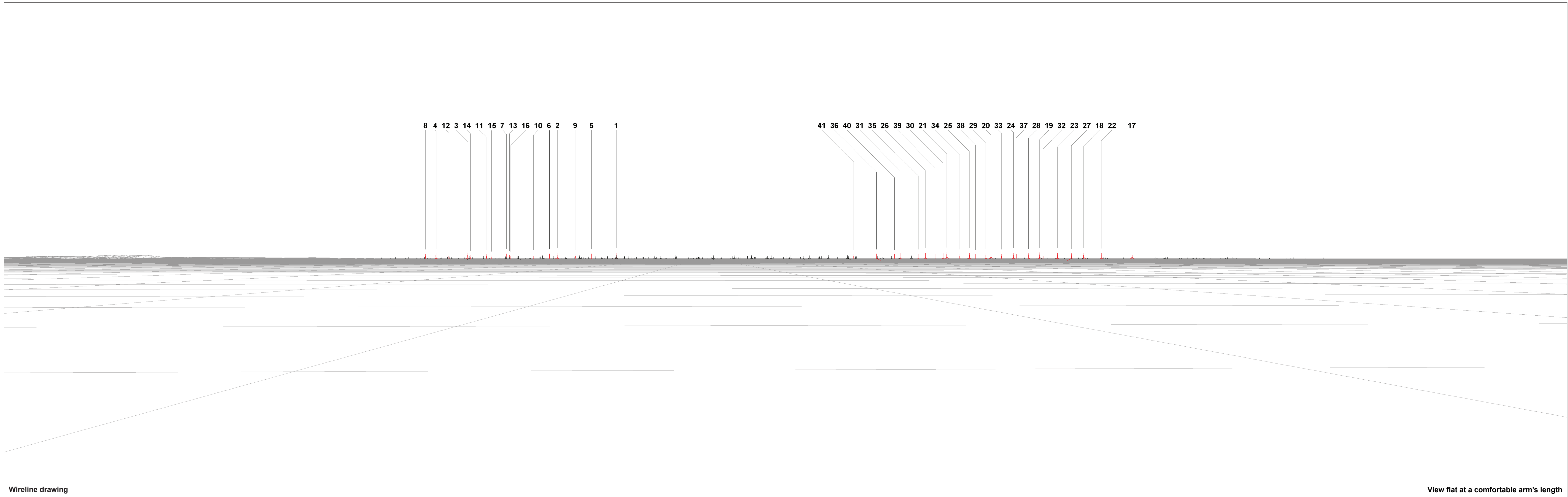
Wireline drawing

OS reference: 625142 E 230614 N  
 Eye level: 1.7 mAOD  
 Direction of view: 183°  
 Nearest turbine: 56.3 km  
 VE Array Area: 55.1 km

Horizontal field of view: 90° (cylindrical projection)  
 Principal distance: 522 mm  
 Paper size: 841 x 297 mm (half A1)  
 Correct printed image size: 820 x 130 mm

Camera: Canon EOS 6D  
 Lens: Canon EF 50mm f/1.4  
 Camera height: 1.5 m  
 Date and time: 23/09/2021 13:53

Figure 10.44c  
 Viewpoint E: Harwich  
 Five Estuaries



Wireline drawing

View flat at a comfortable arm's length

OS reference: 625142 E 230614 N  
 Eye level: 1.7 mAOD  
 Direction of view: 93°  
 Nearest turbine: 56.3 km  
 VE Array Area: 55.1 km

Horizontal field of view: 53.5° (planar projection)  
 Principal distance: 812.5 mm  
 Paper size: 841 x 297 mm (half A1)  
 Correct printed image size: 820 x 260 mm

Camera: Canon EOS 6D  
 Lens: Canon EF 50mm f/1.4  
 Camera height: 1.5 m  
 Date and time: 23/09/2021 13:53



Baseline Photograph (operational offshore wind turbines have been rendered into this view)

View flat at a comfortable arm's length

<b>OS reference:</b> 625142 E 230614 N	<b>Horizontal field of view:</b> 53.5° (planar projection)	<b>Camera:</b> Canon EOS 6D
<b>Eye level:</b> 1.7 mAOD	<b>Principal distance:</b> 812.5 mm	<b>Lens:</b> Canon EF 50mm f/1.4
<b>Direction of view:</b> 93°	<b>Paper size:</b> 841 x 297 mm (half A1)	<b>Camera height:</b> 1.5 m
<b>Nearest turbine:</b> 56.3 km	<b>Correct printed image size:</b> 820 x 260 mm	<b>Date and time:</b> 23/09/2021 13:53
<b>VE Array Area:</b> 55.1 km		



Photomontage: Proposed Development

View flat at a comfortable arm's length

<b>OS reference:</b> 625142 E 230614 N	<b>Horizontal field of view:</b> 53.5° (planar projection)	<b>Camera:</b> Canon EOS 6D
<b>Eye level:</b> 1.7 mAOD	<b>Principal distance:</b> 812.5 mm	<b>Lens:</b> Canon EF 50mm f/1.4
<b>Direction of view:</b> 93°	<b>Paper size:</b> 841 x 297 mm (half A1)	<b>Camera height:</b> 1.5 m
<b>Nearest turbine:</b> 56.3 km	<b>Correct printed image size:</b> 820 x 260 mm	<b>Date and time:</b> 23/09/2021 13:53
<b>VE Array Area:</b> 55.1 km		





**F I V E**   
**ESTUARIES**  
OFFSHORE WIND FARM

PHONE  
EMAIL  
WEBSITE  
ADDRESS

0333 880 5306  
fiveestuaries@rwe.com  
[www.fiveestuaries.co.uk](http://www.fiveestuaries.co.uk)

COMPANY NO

Five Estuaries Offshore Wind Farm Ltd  
Windmill Hill Business Park  
Whitehill Way, Swindon, SN5 6PB  
Registered in England and Wales  
company number 12292474

